



**EASTERN WINGS EQUIPMENT**

THE FIRESTOP & INSULATION SPECIALIST



**Authorized Agents & Distributors of :**



About Us ..... 1

Showcase Of Projects .....2

Perspective Fire Stop Application for ..... 3  
Curtain Wall & Construction Joints

Perspective Fire Stop Application for ..... 4  
MEP Openings & Data Cable Management Solutions

STI Firestop Products ..... 5-8

Thermafiber Insulation Products ..... 9-14

Tri-Max Products ..... 15-24

Tigerfoam Products .....25

EWE Lifts ..... 26-27

EWE Projects .....28

Eastern Wings Equipment (EWE) specializes in passive fire protection systems, thermal insulation products and fire stopping in the aviation, oil & gas manufacturing plants, hotels, resorts, hospitals and high-rise construction industries. We take pride in our focused approach towards all our clientele, and always guarantee our maximum attention and commitment.

EWE is a part of Eastern Group of companies (EGC) which was founded in 1985. EGC has diverse businesses across the Middle East, catering to both the service and trade industries. EWE (firestop division) blossomed in the midst of the world's property boom, right here in the strategically located capital of the Middle East – Dubai.

Keeping strong ties in the MENA Region, East Africa, Europe and America, we are able to source the most innovative firestop solutions available today and install a variety of UL systems through our network of civil defense approved applicators. This helps our suppliers and manufacturers remain committed to the development of innovative and reliable fire stopping solutions.

Listed below are some of our products:

- **STI Firestop:** These products and services provide complete solutions to even most complex fire stopping problems. Committed to Firestop market leadership in products, systems, testing and knowledge, all Specseal and Ez-path products are UL Listed and Classified.

- **Thermafiber®:** It is one of the best mineral wool products for applications ranging from sound attenuation, thermal insulation, perimeter fire containment systems and Life Safety Insulation Systems. Thermafiber is a UL Listed and Classified product.

- **Owens Corning® - Pipe & Mechanical Insulation:** Our insulation products are available for every building need. From schools to businesses and family homes, Owens Corning insulation has solutions that combine commercial quality with residential comfort.

**Tri-Max:** For more than a decade, the TRI-MAX™ brand has been synonymous with quality and innovation in the fire technology industry. Founded by Dave Mahrt, Kingsway, the manufacturer of TRI-MAX™ Cold CAF, has sold over 10,000 fire suppression systems to the military, public agencies, industrial contractors and private companies world-wide.

As a Gun Ship helicopter pilot and Chief Warrant officer in Vietnam and a Forest Service contracted fire suppression pilot for over 20 years, Dave witnessed firsthand the inadequacy of today's equipment and its inability to combat fires efficiently. Committed to making the trade a safer place, he created what is known today as the "TRI-MAX™ Cold CAF family" of fire suppression systems.

- **Tiger Foam E-84 Class 1 Fire-Rated Foam Insulation:** It is a multipurpose, two-part, closed-cell polyurethane formula specifically manufactured for fire retardancy. The packaging, delivery system and components have been designed to be user and environment friendly. These systems are both portable and disposable. They are completely self-contained to provide flexibility in end-use performance. Tiger Foam E84 Fire-Rated SPF Class 1 Spray Foam can assist in attaining LEED and/or ENERGY STAR® Certification.

- **EWE Lifts:** It is equipped with electro-hydraulic system to ensure years of safe operation. The whole unit can be raised up by one or two people in a short time, powered by 220v AC or 12v DC. The lifts are lightweight and durable with low maintenance costs. It has a safe & compact design that makes transportation easier. With highly efficient standard components and methodical design, this lift also has an epoxy coating to protect from corrosion in different climates.

From the largest to the most complex project requirements, our expert team of professionals provide custom-made and cost-effective firestop safety solutions that have become an imperative part of the construction business today. EWE's products protect properties, save energy and most importantly... save LIVES!



## **EWE** SHOWCASE OF PROJECTS...



**Etihad Towers - Abu Dhabi**  
**Product used :**  
**STI, Thermafiber, EWE Lifts**



**Burj Khalifa - Dubai**  
**Product used :**  
**STI, Thermafiber**



**Aldar HQ - Abu Dhabi**  
**Product used :**  
**STI, Thermafiber, EWE Lifts**



**Cleveland Clinic - Abu Dhabi**  
**Product used :**  
**STI, Thermafiber**



**Shams Gate - Abu Dhabi**  
**Product used :**  
**STI, Thermafiber, EWE Lifts**



**City of Lights - Abu Dhabi**  
**Product used :**  
**STI, Thermafiber, EWE Lifts**



**Dubai Marina Residence**  
**Product used :**  
**STI, Thermafiber, EWE Lifts**



**Abu Dhabi Midfield Terminal Airport**  
**Product used :**  
**STI, Thermafiber**



**Mafraq Hospital**  
**Product used :**  
**STI, Thermafiber, EWE Lifts**



**Princess Towers**  
**Product used :**  
**STI, Thermafiber, EWE Lifts**



**Al Maktoum International Airport**  
**Product used :**  
**STI, Thermafiber, EWE Lifts**

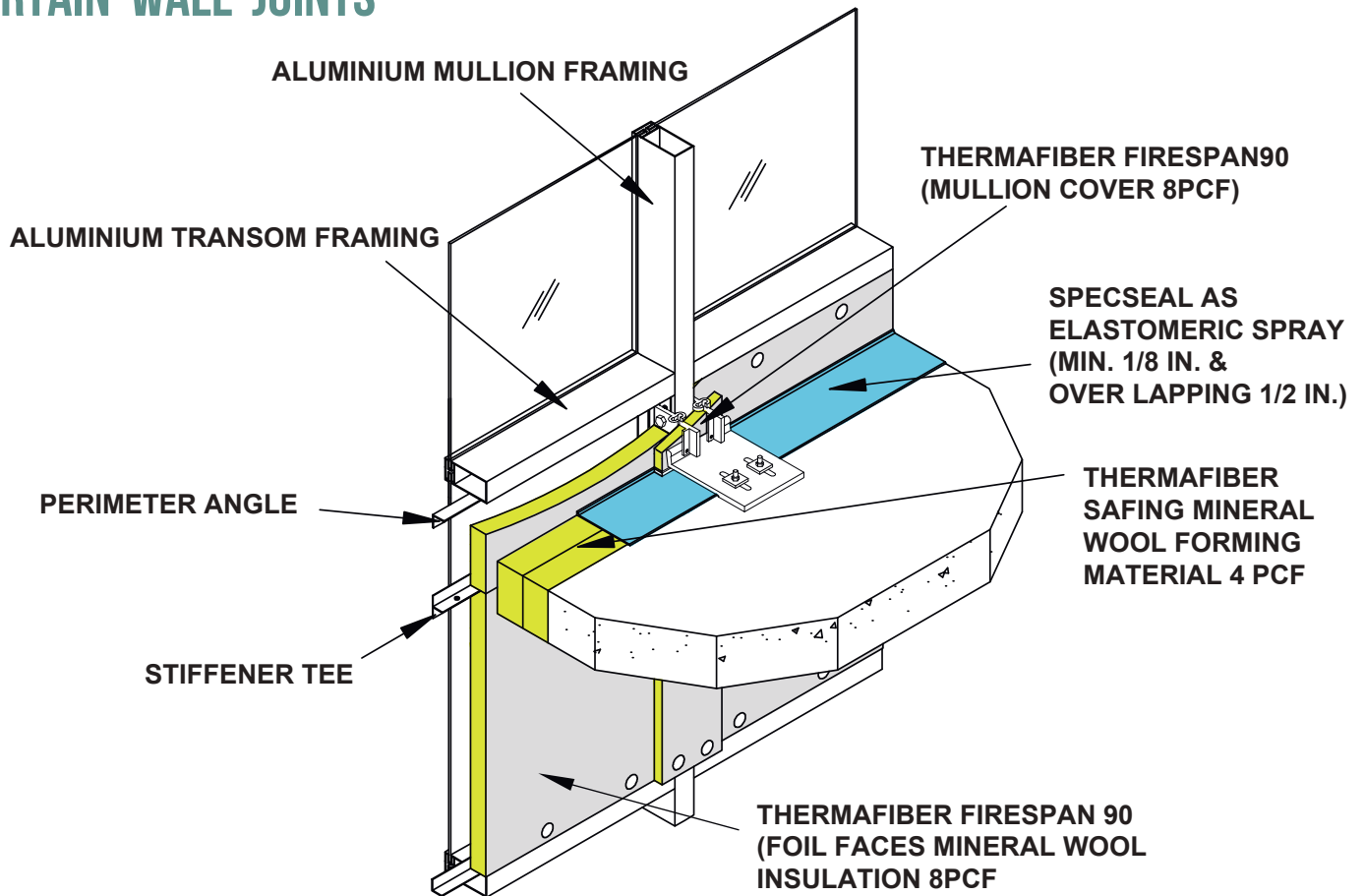


**Fairmont Hotel Dubai**  
**Product used :**  
**STI, Thermafiber, EWE Lifts**

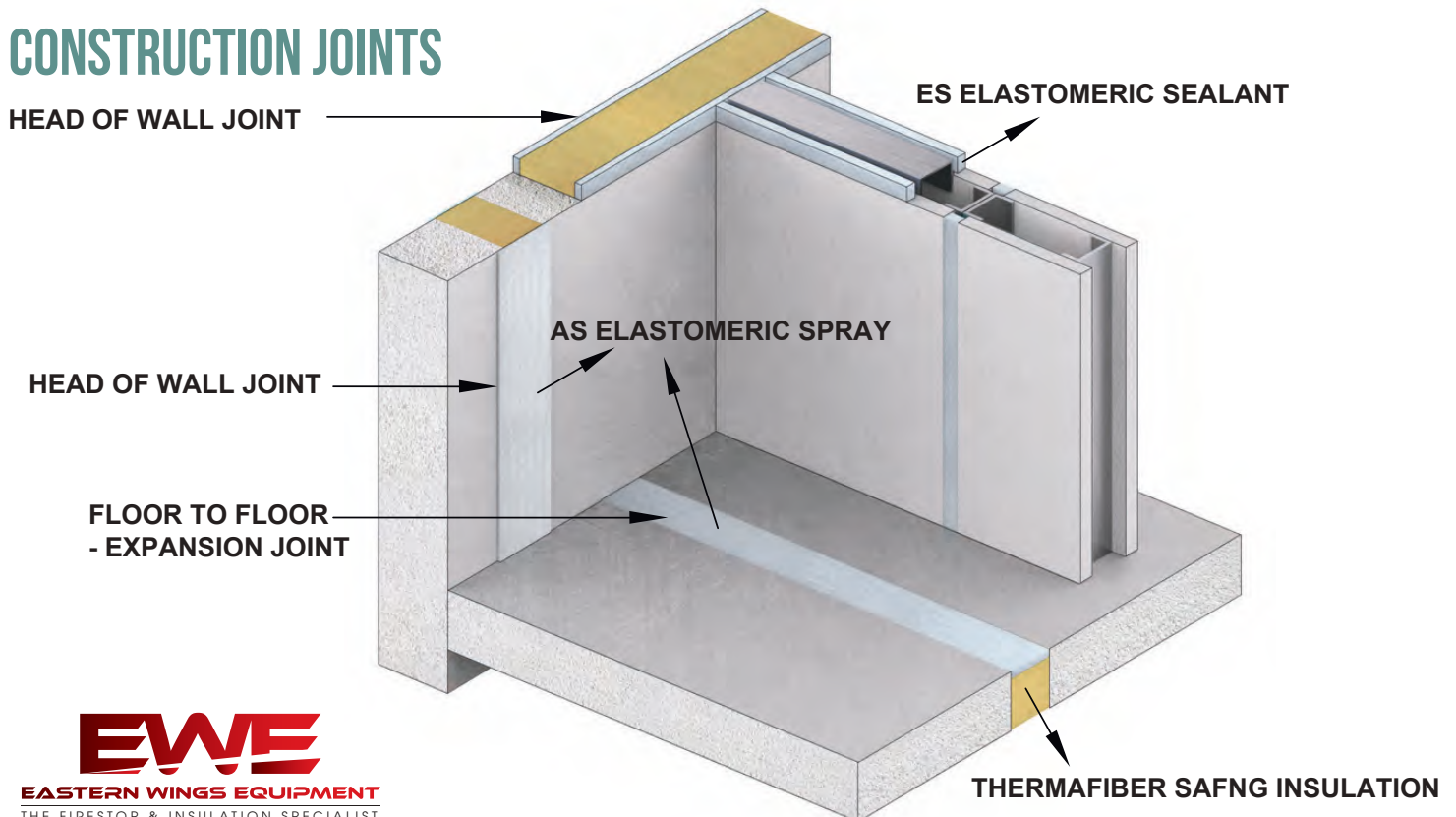


# FIRESTOP APPLICATION

## CURTAIN WALL JOINTS

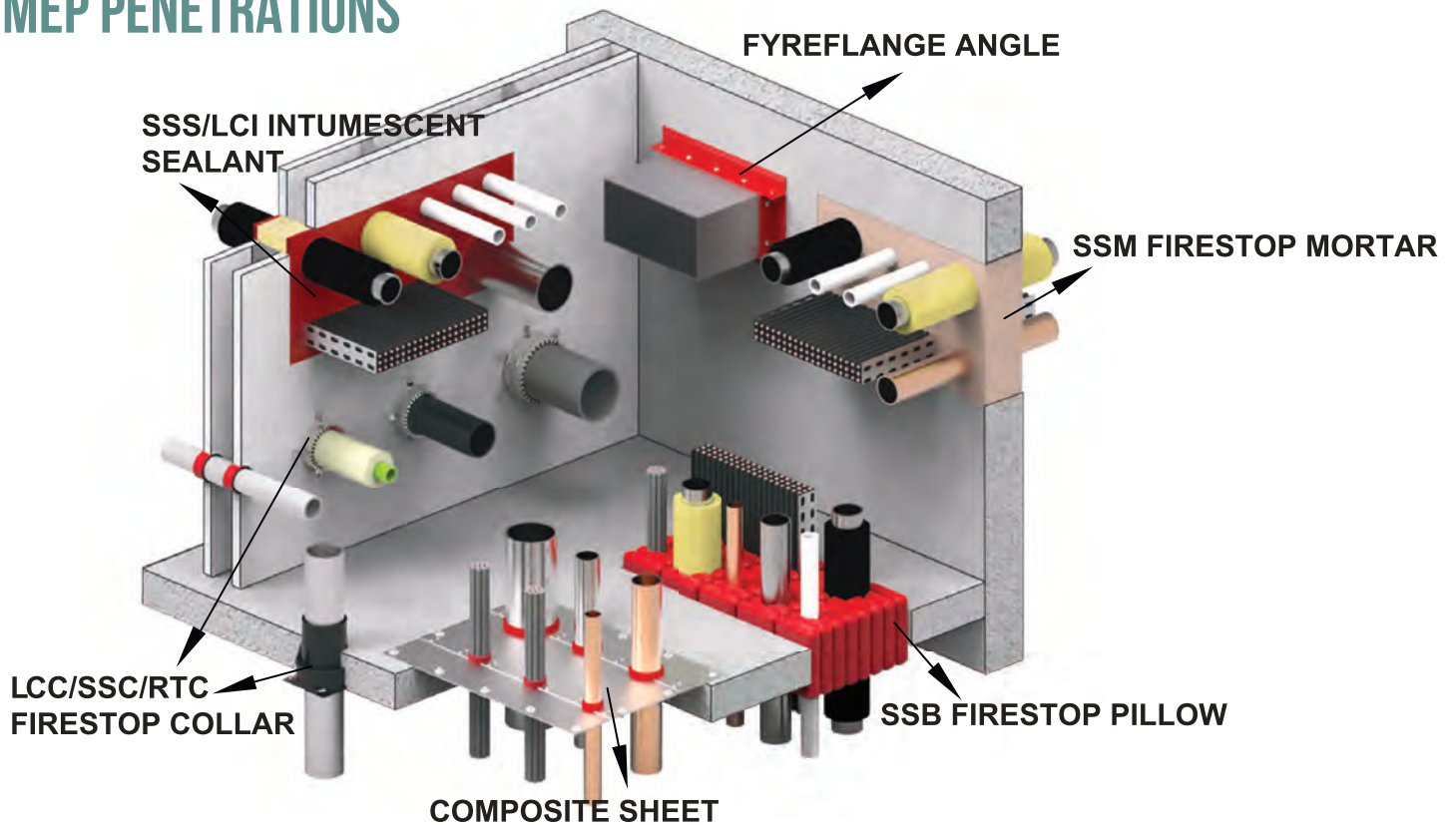


## CONSTRUCTION JOINTS

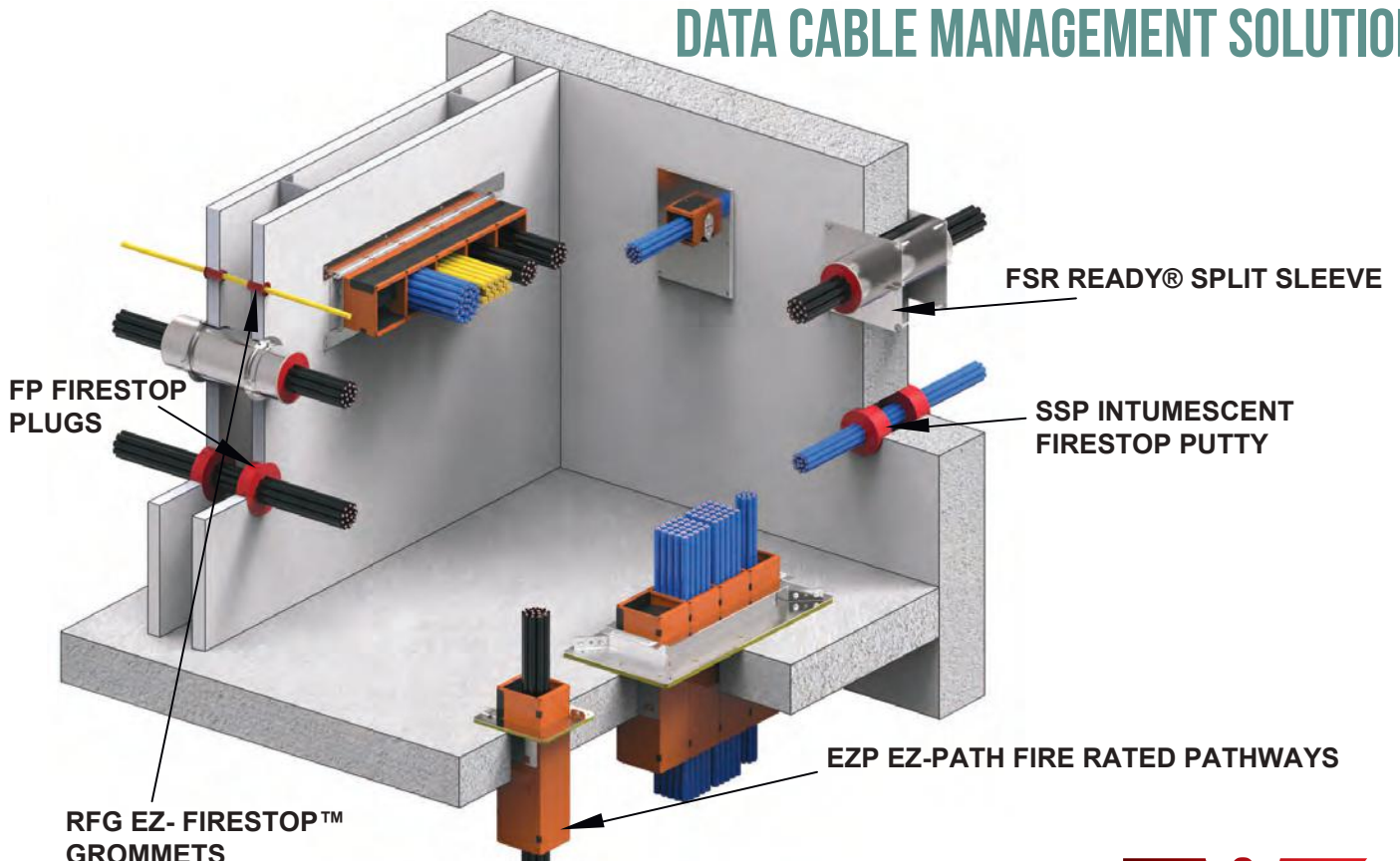


# FIRESTOP APPLICATION

## MEP PENETRATIONS



## DATA CABLE MANAGEMENT SOLUTION



## ✓ AS Elastomeric Firestop Spray

AS Elastomeric Spray is a non-halogenated, latex based, highly elastomeric spray coating designed to provide passive smoke and fire protection in construction joints, curtain wall gaps and certain penetrations.

This spray is designed to adhere to virtually all construction surfaces and may be applied using airless spray equipment or with a brush. Its premium latex binder system is totally resistant to water and will not re-emulsify after drying.



## ✓ ES Elastomeric Firestop Sealant

ES Elastomeric Sealant is a non-halogenated latex-based, highly elastomeric caulk designed to provide passive smoke and fire protection in construction joints. It is engineered to restore sound attenuation properties to sound-rated ceilings and partitions.

This sealant is designed to adhere to virtually all construction surfaces and may be applied using standard caulking equipment or by troweling. Its premium latex binder system is totally resistant to water and will not re-emulsify after drying.



## ✓ SSS Intumescent Firestop Sealant

SSS Intumescent Sealant is a product designed to seal a wide range of through-penetrants against the spread of fire, smoke, toxic gasses and water. It is a two stage intumescent technology product, which expands aggressively to quickly close off voids left by the burning or melting of combustible materials.

This sealant is designed to adhere to virtually all construction surfaces and penetrant materials. It may be applied using standard caulking equipment or by troweling. It has excellent caulking properties on vertical or overhead surfaces. It will not separate or shrink when dried. It contains no solvents.



## ✓ LCI Intumescent Firestop Sealant

LCI Intumescent Sealant is a product designed to seal a wide range of through-penetrants against the spread of fire, smoke, toxic gasses and water.

This sealant is designed to adhere to virtually all construction surfaces and penetrant materials. It may be applied using standard caulking equipment or by troweling. It has excellent caulking properties on vertical or overhead surfaces. It will not separate or shrink when dried. It contains no solvents.



## ✓ SIL Silicone Firestop Sealant

SIL Silicone Sealant is a one-part neutral curing silicone sealant designed to provide passive smoke and fire protection in construction joints and through-penetration applications. This sealant is designed to adhere to virtually all construction surfaces and may be applied using standard caulking equipment or by troweling.

It reacts with atmospheric moisture to form a tough durable seal. This material can also insulate openings to prevent damage from occasional water spillage and dust penetration in sensitive areas.







## SSM Firestop Mortar

Firestop Mortar is an economical, light-weight cement-based firestop product. This passive material uses a combination of heat sinking and insulating properties to provide a high level of fire resistance.

It is designed to seal through-penetrations, construction gaps or blank openings. It can be associated with other STI products. Its low density makes re-penetration for retrofitting a simple task.

It is mixed with water and may be applied by pouring, pumping, or troweling. Firestop Mortar is designed to dry quickly and will not crack or spall due to freezing or changes in temperature.



## SSB Intumescent Firestop Pillows

Firestop Pillows are designed to firestop through penetrations in wall and floor applications. These intumescent and highly resilient pillows are installed in openings by compressing and stacking into the opening in a brick-like fashion. This method of sealing offers easy retrofitting of through-penetrants without damaging the firestop seal.

Pillows consist of a mineral fiber core material sealed with a water resistant intumescent membrane. This coated core material is heat-sealed in a tough, non-irritating, fire-retardant polythene bag.



## LCC & RTC Intumescent Firestop Collars

LCC Intumescent Collars are factory-manufactured collars designed to firestop plastic pipes. A molded intumescent insert is set in a galvanized metal collar. LCC collars are specifically sized to fit 38mm, 51mm, 76mm and 102mm diameter trade sized pipes.

From a temperature of 160°C, the intumescent insert begins to expand rapidly to completely seal the through-penetration. The expansion continues up to 538°C.

RTC Intumescent Collars are adjustable collars designed to seal 76mm and 102mm diameter trade size pipes.



## SSW Intumescent Firestop Wrap Strip

Intumescent Wrap Strips are highly flexible, elastomeric strips designed to firestop combustible penetrations. Convenient rolls, or individually sized strips facilitate installation and minimize waste.

These products utilize an intumescent technology, providing very responsive and highly directionalized expansion. Their fast expansion provides quick closure of burning combustible penetrants.

From a temperature of 120°C, the intumescent strip begins to expand rapidly to seal completely the through-penetration. The expansion continues up to 538°C.



## Smoke N Sound Acoustical Products

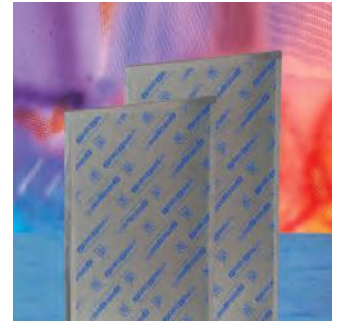
Smoke N Sound sealant and spray are high quality acrylic latex products designed for sealing through-penetrations, linear joints and gaps in smoke rated barriers. This solution is designed to adhere to virtually all construction surfaces. Its premium latex binder system is totally resistant to water and will not re-emulsify after drying.

Smoke N Sound sealant may be applied using standard caulking equipment or by troweling. It has excellent caulking properties on vertical or overhead surfaces



## ✓ Composite Sheet

The intumescent Composite Sheet is a lightweight, rigid firestop panel consisting of an intumescent layer bonded to a galvanized steel sheet reinforced with steel wire mesh covered with aluminum foil. It is designed to seal medium to large size openings with a variety of different penetrants. When exposed to temperatures in excess of 177°C, Composite Sheet expands minimum 15x to form a dense insulative char that minimizes heat transfer.



## ✓ Powershield™ Electrical Box Inserts

Powershield electrical box insert is a one-component pad designed to provide passive smoke and fire protection in electrical switch or receptacle boxes.

The intumescent insert has been designed to install inside the box, directly against the back wall. It features an adhesive strip applied to the back of the pad to ensure adhesion to the back of an electrical box.



## ✓ SSP Intumescent Firestop Putty

SSP Intumescent Putty is a non-hardening compound designed to seal through-penetrations against the spread of fire, smoke and toxic gasses. Requiring no tools, it is soft and pliable and can be installed by hand. Designed to adhere to all common construction materials.

SSP Intumescent Putty Pads provides the same level of protection for easy application to electrical boxes or other through-penetrants.



## ✓ CS Firestop Cable Spray

Cable Spray is an intumescent, latex-based spray applied coating designed to protect grouped electrical cables against the propagation of fire. This material will limit flame spread and provide short-term circuit integrity during a fire situation.

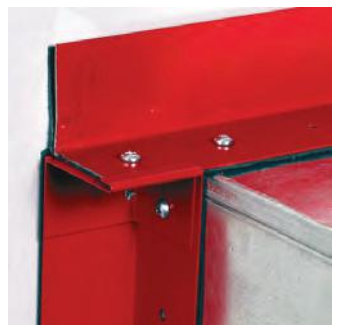
It is engineered to adhere well to virtually all cable jacketing materials and may be applied using airless spray equipment or with a brush. Its premium latex binder system is totally resistant to water and will not re-emulsify after drying.



## ✓ FyreFlange™ Firestop Angle

FyreFlange™ Firestop Angles consist of galvanized steel retaining angles with a layer of bonded intumescent material designed to be installed around the perimeter of non-dampened rectangular steel ducts. It can be installed as the duct is installed and inspected just once after the installation is complete.

In the event of fire, FyreFlange™ Firestop Angles prevent duct collapse and minimize deflection. When exposed to temperatures in excess of 177°C, its intumescent system expands to form a dense insulative char that stops the spread of fire and minimizes heat transfer.







# EZ-Path®

## FIRE RATED PATHWAY



RE-ENTERABLE

INTUMESCENT

WATER RESISTANT

SMOKE BARRIER

STC RATING

CABLES

CABLE TRAY



FROM 1 CABLE TO 5,000 CABLES, **WE HAVE YOUR SOLUTION**  
THE ONLY ZERO MAINTENANCE CABLE MANAGEMENT SOLUTION

### Maximum Fire & Smoke Protection

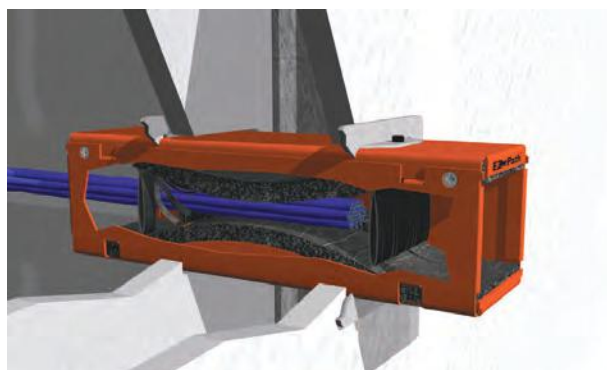
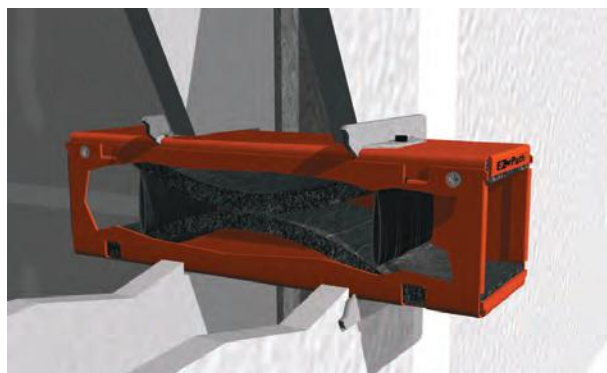
- Maximum resistance to fire and smoke whether empty or 100% visually filled.
- Assures fire and smoke protection with every new or retrofit cable installation.
- Superior fire and smoke leakage vs. standard sleeve and putty systems.
- Unlike conventional sleeve and putty systems, EZ-Path® remains fire and smoke compliant 100% of the time.

### No Firestopping Required

- Built-in firestopping system automatically adjusts to the number of cables installed.
- Design assures it is firestopped at all stages of use.
- Mechanical application eliminates the use of sealant, putty and other products that need to be removed and replaced.

### Fast-Acting Intumescent Material

- Engineered for rapid expansion when exposed to fire or high temperatures.
- Intumescent material responds to flames or heat by quickly sealing the pathway and preventing the passage of flames and smoke.
- Innovative built-in firestop design assures it is firestopped and smoke-sealed — even at maximum cable loading.





**THERMAFIBER. (USA)** Thermafiber is a Foundation of Firestop,

## **High Performance Greenest Commercial Insulation Products for all Building Projects. UL Approved**

Thermafiber is a leading manufacturer of Mineral Wool insulation products. For decades we have been the pioneer in perimeter fire containment systems. Our commercial insulation products are installed in 6 of the 12 tallest buildings in the world, and is the #1 specified commercial mineral wool.

Thermafiber also offers industrial, residential, and marine mineral wool products that conserve energy, control sound, and provide fire protection.

Thermal and fire protection in rain screen/cavity wall construction.

Rain barrier insulation easily installs with common wall ties façade channels and insulation hangers

### **Our Products are versatile and applied in followings areas:**

- **Civil Expansion Joints & Head of Wall Joints,**
- **Curtain Wall Partition,**
- **Thermal Moisture & Sound Insulation.**

Kindly find attached our certified UL & DCD compliant Products Data Sheets System for your perusal.

Will be more than obliged to receive your inquiries and give you first-hand Information & Clarification.

# Longer lasting at higher temperatures: Thermafiber is the hands-down choice for curtain walls, interior walls, and exterior walls

## Curtain Wall Products

### New! Impasse® Curtain Wall Systems

- Designed for perimeter fire containment systems
- Patented installation technique locks the fire barrier
- Proprietary hangers make installation highly accurate
- Simpler and faster to install than any other system available

### Thermafiber FireSpan® 90 and FireSpan® 40

- Highly fire and smoke resistant
- Provides 1-, 2- and 3-hour protection in a variety of curtain wall assemblies
- Unfaced felt or foil facing that serves as a vapor retarder
- Tested, listed and labeled for UL and Intertek assemblies
- Custom sizes to fit specific spandrel openings

### Thermafiber Safing Insulation

- Stop the spread of fire and smoke between floors
- Also ideal for poke-throughs, penetrations and construction joints

## Multi-Purpose Products

### VersaBoard™ 35, 40, 60, 80

- Designed for various commercial construction applications
- Engineered to control sound and provide energy saving thermal protection
- Available with multiple facings

## Interior Wall and Ceiling Products

### SAFB (Sound Attenuation Fire Blankets)

- Specifically designed for sound control between floors and walls
- Subjected to more third-party fire, sound and thermal tests than any other mineral wool product
- Thermafiber SAFB has demonstrated an improvement of STC (Sound Transmission Class) ratings by up to 11 points

### SoundZero®

- Fabric-faced acoustical blanket for interiors of theaters, sound studios and other areas where noise reduction is important
- Material is a unique blend of textile glass and flame-resistant fibers
- Offers a high R value relative to its thickness and density

## Exterior Wall Products

### Thermafiber FS-15 and FS-25

- Proven superiority over comparable low-melt temperature insulation products
- Better life-safety protection for low-rise commercial buildings
- Excellent thermal resistance reduces heat transmission, saves energy and improves occupant comfort

### Thermafiber RainBarrier® 45 & RainBarrier® HD

- Specifically designed for rain screen applications
- Drains condensation, driving rain or humidity that enters façade system
- Provides increased thermal insulation and life safety
- Highly UV resistant
- Tested, proven formulation maintains integrity over life of building



## Fire Containment Insulation

- + Exceptional performance in Perimeter Fire Containment Systems
- + Provides life saving fire protection in rated assemblies
- + Fire resistant to temperatures above 2,000°F (1,093°C)
- + Easy to fabricate for through penetrations and firestopping
- + Conserves energy, reduces greenhouse gas emissions
- + Resists moisture
- + Controls noise and sound

## Thermafiber® Safing™



Thermafiber® Safing™ is compression fitted between FireSpan® insulation and the concrete slab edge to create a perimeter fire containment system.

## Curtain Wall Insulation

- + Exceptional performance in Perimeter Fire Containment Systems
- + Provides fire protection in rated assemblies
- + Fire resistant to temperatures above 2,000°F (1,093°C)
- + Conserves energy, reduces greenhouse gas emissions
- + Mold resistant
- + Controls noise and sound
- + Natural dark color provides shadowing in glass spandrels

## FireSpan® 90 & FireSpan® 40 (Fire Barrier)

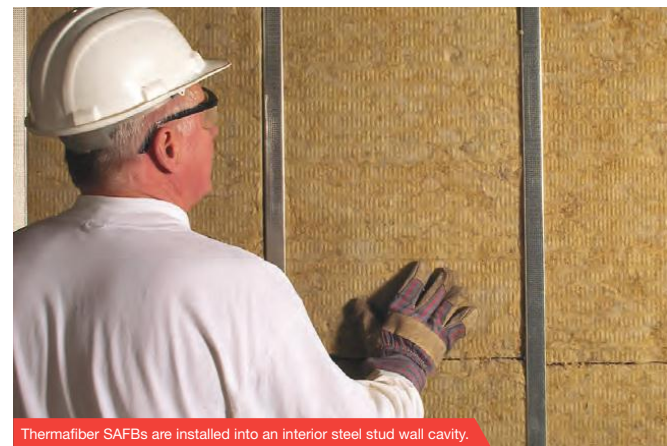


Thermafiber insulation provides the critical components of the perimeter fire containment system in the Trump International Hotel and Tower in Chicago.

## Sound Control Insulation

- + Exceptional sound and noise absorption
- + Excellent Thermal Performance (R-Value of 3.7 per inch)
- + Adds STC value to wall and floor-ceiling assemblies
- + Provides life saving fire protection in rated assemblies
- + Fire resistant to temperatures above 2,000°F (1,093°C)
- + Conserves energy, reduces greenhouse gas emissions
- + Mold Resistant

## Thermafiber® SAFB™ (Sound Attenuation Fire Blankets)



Thermafiber SAFBs are installed into an interior steel stud wall cavity.

**EWI**  
EASTERN WINGS EQUIPMENT  
THE FIRESTOP & INSULATION SPECIALIST

LEED® v2009 Green Building Credits				
Minimum	Energy & Atmosphere	Materials & Resources	Indoor Environmental Quality	Innovation in Design
70% Recycled Content <sup>1</sup>	1	2.1, 2.2 4.1, 4.2 5.1, 5.2	9	1





## Continuous Insulation (ci)

- + Non-combustible, non-deteriorating, & inorganic
- + Repels and efficiently drains water
- + Heavy density rigid board
- + Conserves energy, reduces greenhouse gas emissions
- + Fire resistant to temperatures above 2000° F (1,093° C)
- + Enhances sound control
- + Natural dark color provides camouflaging in open joint façades

## RainBarrier® HD

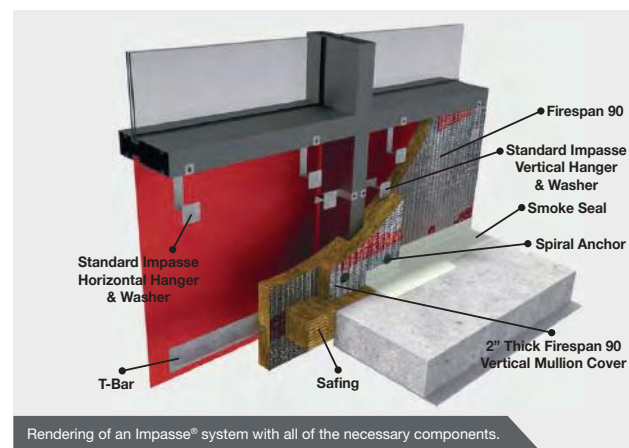


RainBarrier® HD is a high density board that provides thermal insulation, fire protection and acoustical control while efficiently draining water from a wall cavity system.

## Insulation Hanger System

- + Provides up to 3 hour fire protection in curtain wall systems
- + Patented design
- + Saves time and money over traditional jobsite installation methods
- + Ideal for factory installing curtain wall insulation
- + Easy to install
- + Requires installation of fewer mechanical attachments
- + UL approved and listed

## Thermafiber® Impasse® System



Rendering of an Impasse® system with all of the necessary components.

## Sound Control Insulation

- + Exceptional sound and noise absorption
- + Black fabric facing provides light controlling finished surface
- + High R-value helps conserve energy
- + Ideal for use on walls and ceilings
- + Easy to fabricate and install
- + Mold Resistant

## Thermafiber® SoundZero®



SoundZero's black fabric is smooth, durable, water repellent, flame resistant, and mold resistant to provide a long-lasting finished surface.

LEED® v2009 Green Building Credits				
Minimum	Energy & Atmosphere	Materials & Resources	Indoor Environmental Quality	Innovation in Design
<b>70%</b>	1	2.1, 2.2 4.1, 4.2 5.1, 5.2	9	1
Recycled Content¹				





## Impasse: A better way to install a better system

### Time-saving Impasse installation



The *Impasse Hanger* is impaled into the insulation. The forked leg provides quick, easy installation. The forked leg of the hanger provides a shelf-like ledge to support the insulation.



A *Locking Washer* slides over the hanger to fit tightly against the insulation panel. The forks are bent in opposite directions.



The *FireSpan*® insulation is inserted into the spandrel area, and the hangers are screwed to the mullion.



After *FireSpan Mullion Covers* are placed over exposed vertical mullions or insulation seams, *Spiral Anchors* are screwed through the *FireSpan Mullion Cover* into the *FireSpan* spandrel insulation.

### Insulation Hanger System Components†



Impasse Hangers



Locking Washer



Spiral Anchor

†Custom hangers available for unique design situations.

**Thermafiber**  
THE NAME IN MINERAL WOOL®

Thermafiber Inc.  
3711 Mill Street, Wabash, IN 46992  
260-563-2111 • 888-834-2371 • Fax: 260-563-8979  
E-Mail: [info@thermafiber.com](mailto:info@thermafiber.com)  
[www.thermafiber.com](http://www.thermafiber.com)

© 2011 Thermafiber, Inc.  
TF 464



Printed in USA

THERMAFIBER®, FIRESPAN®, IMPASSE®, THERMAFIBER INSOLUTIONS® and THE NAME IN MINERAL WOOL® are registered trademarks of Thermafiber Inc.

Underwriters Laboratories Inc. is a registered trademark of Underwriters Laboratories Inc.

AutoCAD is a registered trademark of Autodesk.

\*Reed Construction Data, April 2010.



NAIMA  
NATIONAL ASSOCIATION  
OF INSULATION MANUFACTURERS



# PIPE & MECHANICAL INSULATION

**OWENS  
CORNING**®

SSL II® with ASJ Max & No Wrap  
Fiberglas™ Pipe Insulation

VaporWick® Pipe Insulation

FOAMULAR® XPS Pipe Insulation

Fiberglas™ Pipe & Tank Insulation

Flexwrap® Fiberglas™ Insulation

UtiliCore® Fiberglas™ Insulation

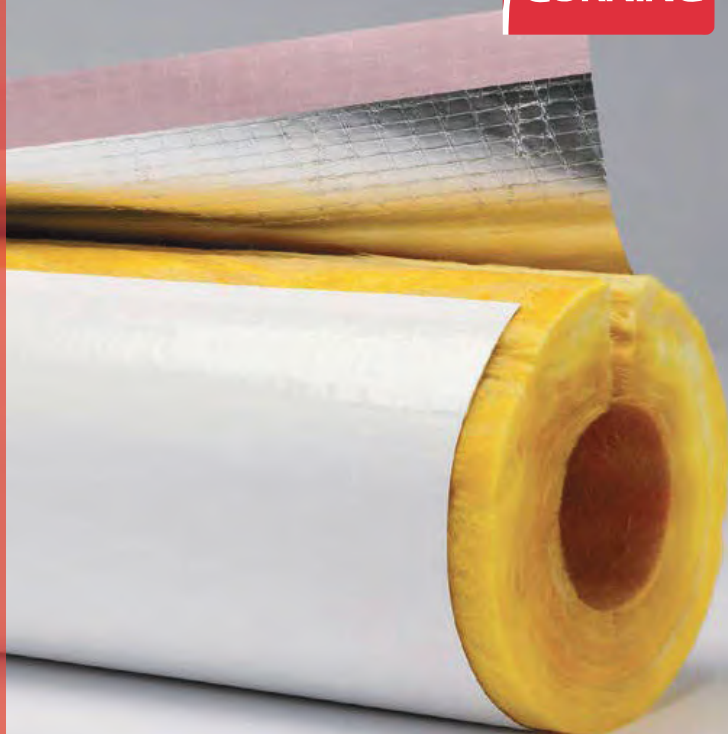
700 Series Fiberglas™ Insulation

Insul-Quick® Fiberglas™ Insulation

Fiberglas™ SCR Insulation

Fiberglas™ TIW Insulation

SoftR® Duct Wrap



**SSL II® with ASJ Max &  
No Wrap Fiberglas™  
Pipe Insulation**



**VaporWick®  
Pipe Insulation**



**FOAMULAR®  
XPS Pipe Insulation**



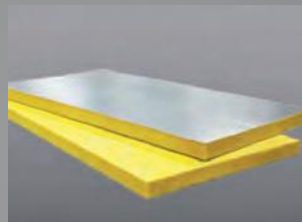
**Fiberglas™ Pipe  
and Tank Insulation**



**Flexwrap®  
Fiberglas™ Insulation**



**UtiliCore®  
Fiberglas™ Insulation**



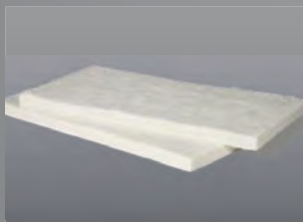
**700 Series  
Fiberglas™ Insulation**



**Insul-Quick®  
Fiberglas™ Insulation**



**Fiberglas™  
SCR Insulation**



**Fiberglas™  
TIW Insulation**



**SoftR®  
Duct Wrap**



# No matter your pipe and mechanical insulation needs, we've got you covered

## SSL II® with ASJ Max Fiberglas™ Pipe Insulation

- Durable, cleanable ASJ Max jacket
- SSL II positive closure system
- Maximum operating temperature 1,000° F

## SoftR® Duct Wrap

- Condensation control
- Enhanced comfort control
- Flexible and easy to install

## UtiliCore® Fiberglas™ Insulation

- Lightweight core insulation for removable/reusable covers
- Flexibility to conform to unconventional surfaces and shapes
- Easy fabrication, assembly and installation

## 700 Series Fiberglas™ Insulation

- Flexible, semi-rigid or rigid boards for acoustic and thermal insulation
- Variety of density, thickness and facing options to match your job needs
- Easy to handle, fabricate and install

## System Components

1. Air Cylinder is a 6 CF SCUBA cylinder operating at 3000 psi.
2. AIR CYLINDER REGULATOR is a 3000 psi Scuba regulator which has a 5000 psi. gauge and a preset pressure of 120-140 psi.
3. AIR CYLINDER VALVE located above the Air Cylinder has a turn handle to pressurize the system.
4. AIR PRESSURE HOSE is 1/4 x 7 1/2 inch high pressure rated at 3000 psi, with a quick release connector.
5. COMPONENT HOLDER secures the Premix Tank and the Air Cylinder. The latest model has a hand carrying grip. The Component Holder utilizes a knob to control the plates that secure the Air Cylinder and Premix Tank inside the Holder.
6. FOAM DISCHARGE HOSE is 1/2 x 20 inch rubber.
7. FOAM DISCHARGE VALVE is a squeeze type with variable flow control and a hole for the safety pin.
8. REGULATOR HIGH PRESSURE GUAGE is located on the side of the Regulator and shows the Air Cylinder pressure.
9. PREMIX TANK is a 3 gallon stainless steel unit which has a working pressure of 100-115 psi.
10. PREMIX TANK PRESSUR GUAGE has charged, normal and recharge ranges.
11. PREMIX TANK MANIFOLD threads and off the Premix Tank for filling.
12. PRESSURE RELIEF VALVE is located on the side of the MANIFOLD behind the Pressure Gauge and activates at 175 psi.
13. SAFETY PIN located in the squeeze grip prevents inadvertent activation of the system. A tamper seal may be used in this location as pictured.

### TM 3 COMPONENTS





**Systems Included:**  
TRI-MAX 3 Mini-CAF  
TRI-MAX 3 Pelican-Case  
TRI-MAX 3 CAF-Pack

**Accessories:**

Air Cylinder Pressure Tester/  
Filler Adapter



**Foam Agents:**

- 3% AFFF (Class A, B)
- Class "A" Foam Agent
- 3% AFFF Foam Class B Agent
- 6% AFFF Foam Class B Agent
- Extreme AFFF -20°
- Arctic Foam -40°



Made in the USA

**EW E**  
EASTERN WINGS EQUIPMENT  
THE FIRESTOP & INSULATION SPECIALIST



# 3 Mini-CAF

## Hand-Held CAF System



*Note: GSA Model equipped with copolymer Frame*

The TRI-MAX 3 Mini-CAF system is the smallest of the portable TRI-MAX family of high-energy Cold Compressed Air Foam systems. This compact handheld unit is capable of producing high-energy foams in the range of 10.1 to 20.1. This means that 3 gallons of pre-mix solution expands up to 60 gallons of finished foam product at a rate of over 90 gallons per minute.

The TRI-MAX 3 Mini-CAF Fire Prevention/Fire Suppression System is portable and simple to use, and is a tremendously valuable Initial Response tool.

The TRI-MAX 3 Mini-CAF puts a thick vapor-sealing foam blanket over a flammable liquid or toxic chemical spill, preventing ignition and release of toxic vapors.

Portable Dry Chemical fire extinguishers are inadequate in suppressing fuel fires outside their effective range, which is approximately 3-4 feet. They have no way to prevent a fuel spill from igniting. The discharge distance of the TRI-MAX 3 Mini-CAF is 35-45 feet and allows for a greater standoff distance. This offers an increased margin of safety for personnel who are not wearing protective clothing while attacking a fire.

- **Easy to use - minimal training required**
- **Designed for rapid deployment by first responders**
- **Can be quickly recharged in the field**

### Specifications:

- Height: 28 1/8" Width: 8 3/4"
- Empty weight: 20 lbs.
- Loaded Weight: 46 lbs.
- Tank capacity: 3 gallons
- Finished foam capacity: 60 gallons (400 square feet)
- Discharge flow rate: 90 gal/minute
- Discharge distance: approx. 35-45 feet in a zero-wind condition
- Air Cylinder (Scuba): One 6 cu.ft. 3000 psi
- Operating Pressure: 140 psi
- Dispensing hose: 3/8 x 20" hard rubber
- Air pressure hose: 1/4" x 5 1/4" 3000 psi, exceeds SAE 100R5
- Variable foam expansion: 10:1 to 20:1

*TM 3 Pelican Case model*



### Accessories:

- Additional 6 cu. ft. Air Cylinder
- Universal Mount
- Protective Cover
- Shoulder Strap
- Pelican Case Cover



Made in the USA

# 3 CAF-Pack

## Backpack CAF System



The TRI-MAX 3 CAF-Pack is designed specifically for first responders working in the toughest conditions. The TRI-MAX 3 CAF-Pack is easily handled by a single person and produces a powerful 35-45 foot discharge of fire suppression foam. This patented foam technology provides superior fire extinguishing and fire prevention capabilities.

The TRI-MAX 3 CAF-Pack is housed in a custom fabricated cabinet built with

state-of-the-art materials that make the cabinet durable, yet light and easy to handle. The CAF-Pack's center of gravity, holstered pistol grip and padded straps maximizes comfort and accuracy during emergency situations.



- **Holstered pistol grip nozzle gives user accurate control of foam stream**
- **Uniform cabinet shape allows for easy stacking for mass transport and storage**
- **Light and durable cabinet protects the unit from the elements and from damage during transportation**
- **When unit is removed, the backpack can be used to transport other items including wounded personnel**

### Specifications:

- Height: 26" Width: 9 ½"
- Loaded Weight: 71 lbs.
- Tank capacity: 3 gallons
- Finished foam capacity: 60 gallons (400 square feet)
- Discharge flow rate: 90 gal/minute
- Foam discharge distance: approx. 35-45 feet in a zero-wind condition
- Air Cylinder (Scuba): One 6 cu.ft. 3000 psi
- Operating Pressure: 140 psi
- Dispensing hose: 3/8 x 20 inches hard rubber.
- Air pressure hose: ¼ x 7 ½ inch 3000 psi
- Recharge time: 2-4 minutes
- Variable foam expansion: 10:1 to 20:1 and up

### Options & Accessories

- Additional 9 cu. ft. Air Cylinder
- Low Profile Configuration



GREEN



Made in the USA



## Systems Included:

TRI-MAX 10 Custom-CAF

TRI-MAX 20 Custom-CAF

## Accessories:

Air Cylinder Pressure Tester/  
Filler Adapter



## Foam Agents:

- 3% AFFF (Class A, B)
- Class "A" Foam Agent
- 3% AFFF Foam Class B Agent
- 6% AFFF Foam Class B Agent
- Extreme AFFF -20°
- Arctic Foam -40°



Made in the USA



# 10 Custom-CAF

## Installed Component System

A breakthrough in self-contained fire suppression technology by TRI-MAX, Cold Compressed Air Foam has significantly reduced the potential for an uncontrollable heavy equipment fire.

These modest sized systems can be installed on almost any heavy equipment whether industrial, logging, construction, etc.

Harsh working environments can cause hydraulic line failures which lead to disastrous fires, destruction of equipment, and in some cases a fire that extends to the surrounding areas.

With the addition of a TRI-MAX CAF System to any operation, users can quickly react to fires before they have a chance to expand to catastrophic levels.

The 10 CAF systems may be ordered with an external fire hose attachment that will turn equipment into a first response fire apparatus, protecting personnel as well as other assets at the work site.



- **Custom installations for heavy equipment**
- **Quick bolt-on installation for emergency vehicles**
- **No moving parts to fail**
- **Activates in seconds to stop fire and fire hazard in its tracks**
- **10 gallons of solution produces up to 200 gallons of finished foam.**

### Options & Accessories

- Additional 19 cu. ft. Air Cylinder
- Component Configuration
- Custom Installation
- Hose Reel with 50 ft. of 1/2" discharge hose
- Heavy Equipment Installations

### Specifications:

- Height: 13.5" Width: 31" Depth: 15"
- Loaded Weight: 110 lbs. Empty Weight: 40 lbs.
- Premix Tank: 10-gallon capacity
- Finished Foam Capacity: Approximately 200 gallons
- Discharge System: 1/2" pistol grip style or Discharge Manifold with up to four discharge heads.
- Discharge Rate approx.: 90 gal/minute of finished foam
- Foam Discharge Distance from Discharge Hose (if installed): approx. 35-45 feet in a zero-wind condition
- Air Cylinder (Scuba): One (1) 19 cu. ft. 3000 psi
- Operating Pressure: 140 psi
- External Dispensing Hose (if installed): 50 feet of 1/2" hose



Made in the USA

# 20 Custom-CAF

## Installed Component System



The big brother to the TRI-MAX 10 CAF, the TRI-MAX 20 CAF comes in at twice the capacity.

The TRI-MAX 20 CAF system comes with an external fire hose attachment. This will turn equipment into a first-response fire apparatus. You can protect the operation, assets and personnel at any work site.

With the addition of a TRI-MAX 20 CAF System to an operation, users can quickly react to fires either internally or externally before they have a chance to expand and reach catastrophic levels.

- **Re-Designed Frame requires less space.**
- **Outside Hose lay to fight external fires**
- **Quick bolt-on installation for emergency vehicles**
- **Custom installed on heavy equipment for most industries**
- **No moving parts to fail**
- **Activates in seconds to stop fire and fire hazard in its tracks**

### Specifications:

- Height: 48 ¾" Width: 20" Depth: 25 ¼"
- Loaded Weight: 400 lbs. Empty Weight: 240 lbs.
- Premix Tank: 20-gallon capacity
- Finished Foam Capacity: Approximately 400 gallons
- Discharge Nozzle: 1" standard or pistol grip style
- Discharge Rate (max): 300 gal/minute of finished foam
- Foam Discharge Distance: approx. 65-75 feet in a zero-wind condition
- Air Cylinder (Scuba): Two (2) 50 cu. ft. 3000 psi
- Regulator: Adjustable pressure 0-400 psi
- Dispensing Hose: 50 feet of 1" collapsible hose
- Usable Hose Length: 500 plus feet

### Options & Accessories

- Wheel Kit Additional 50 cu. ft. Air Cylinder
- Protective Cover
- External Discharge hose
- Component System Available



GREEN



Made in the USA

### Systems Included:

TRI-MAX 30 Wheeled-CAF  
TRI-MAX 30 SKID-CAF  
TRI-MAX 30 Vertical-CAF  
TRI-MAX 35RT

### Accessories:

Saber Jet™ Nozzle



Air Cylinder Pressure Tester/  
Filler Adapter



100' X 1" Booster  
Hose



Hose Reel



### Foam Agents:

- 3% AFFF (Class A, B)
- Class "A" Foam Agent
- 3% AFFF Foam Class B Agent
- 6% AFFF Foam Class B Agent
- Extreme AFFF -20°
- Arctic Foam -40°



Made in the USA

Edwards AFB, CA



Evergreen CH 54E



US Marines C-130





# 30 Wheeled-CAF

## Compressed Air Foam System



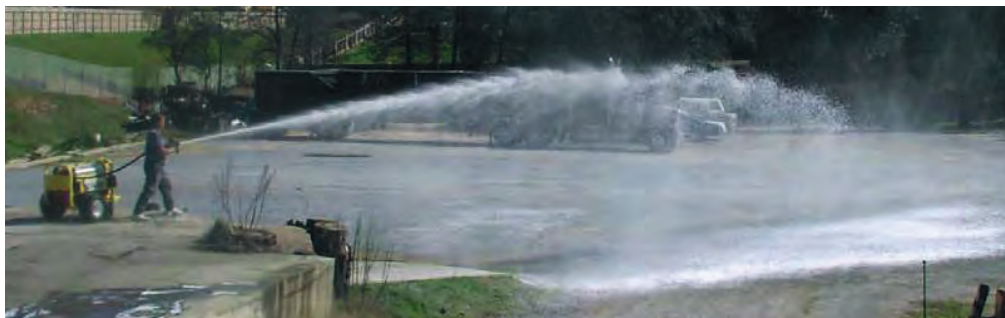
The TRI-MAX 30 CAF is the Standard in CAF technology. The TRI-MAX 30 compressed air foam system is approved by the U.S. Army to replace the halon and 150 lb. dry chemical systems on all Army flight lines.

This extremely versatile system contains 30 Gallons of foam solution that produces approximately 600

gallons of high energy finished foam.

The TRI-MAX 30 system allows for a 65-75 foot standoff distance, which enables personnel to be effective with the unit without jeopardizing their safety by being too close to a fire.

The TRI-MAX 30's responsive performance was dramatically demonstrated in a recent incident at the U.S. Army National Training Center at Barstow Dagget Airport, California, where the TRI-MAX systems played a significant role, not only in suppressing the hanger fire, but also in allowing time to evacuate helicopters to an adjacent hanger.



- Fits through normal doorways and into standard elevators
- Compact and highly maneuverable
- Able to negotiate in and around plant equipment
- Re-serviced quickly in the field
- Provides low cost training solutions for inexpensive exercises

### Specifications:

- Height: 34 7/8" Width: 31" Length: 55 1/2"
- Loaded Weight: 602 lbs. Empty Weight: 360 lbs.
- Premix Tank: 30-gallon capacity
- Finished Foam Capacity: Approximately 600 gallons
- Discharge Nozzle: 1" pistol grip style
- Discharge Rate (max): 300 gal/minute of finished foam
- Foam Discharge Distance: approx. 65-75 feet in a zero-wind condition
- Air Cylinder (Scuba): Two (2) 80 CF 3000 psi
- Regulator: Adjustable pressure 0-400 psi
- Dispensing Hose: 50 feet of 1" hard rubber or collapsible
- Usable Hose Length: 500 plus feet

### Options & Accessories

- Additional 80 cu. ft. Air Cylinder
- Component Configurations Available
- Rough Terrain Tires
- Industrial Air Bottles
- Cover
- Flat lay hose



GREEN



Arctic  
Configuration  
Available



Made in the USA

## نظام تري-ماكس بعجلات برغوة الهواء المضغوط بنظام رغوة الهواء المضغوط



US Army

نظام إطفاء تري-ماكس برغوة الهواء المضغوط ٣٠ جالون هو المعيار القياسي في تكنولوجيا رغوة الهواء المضغوط. كما أن نظام رغوة الهواء المضغوط في نظام إطفاء تري-ماكس ٣٠ جالون معتمد من الجيش الأمريكي بحيث يكون بديلاً لأنظمة الإطفاء بغاز الهالون والمواد الكيميائية ١٥٠ رطل بجميع خطوط رحلات الجيش الأمريكي.



وهذا النظام متعدد الاستعمالات يشتمل على ٣٠ جالون من محلول الرغوة والذي ينتج نحو ٦٠٠ جالوناً من الرغوة الجاهزة عالية الطاقة.

كما يسمح نظام تري-ماكس سعة ٣٠ جالون لأفراد الإطفاء بالوقوف على مساحة ٧٥-٦٥ قدم من النار، مما يتيح لهم التعامل بفعالية مع الوحدة دون المخاطرة بسلامتهم ودون الاضطرار للاقترب من النار.



Shown with optional accessories

كما ظهرت الاستجابة السريعة والأداء المتميز لهذا النظام في حادثة وقعت مؤخراً في مركز التدريب الوطني في مطار بارستو داجيت، كاليفورنيا، حيث لعبت أنظمة إطفاء تري-ماكس دوراً بالغ الأهمية ليس فقط في إخماد حريق حظيرة الطائرات بل وكذلك في إتاحة الوقت اللازم لإخلاء طائرات الهيلوكوبتر إلى حظيرة طائرات مجاورة.

- أنظمة مناسبة للمداخل والأبواب العادية وفي المصاعد القياسية
- صغيرة الحجم وذات قدرة عالية على المناورة
- قادرة على المناورة والحركة في وحول معدات المنشأة
- صيانة سريعة في موقع العمل
- حلول تدريب منخفضة التكلفة للغاية للتدريبات غير

### المواصفات

- الارتفاع ٣٤ ٧/٨ بوصة، العرض: ٣١ بوصة الطول: ٢١ ٥/٨ بوصة
- وزن الحمل: ٦٠ رطل، الوزن الفارغ: ٣٦ رطل
- الخزان المعد مسبقاً: سعة ٣٠ جالوناً
- سعة الرغوة الجاهزة: حوالي ٦٠٠ جالون
- فوهة التفريغ: تصميم مقبض مسدس ١ بوصة
- سرعة التفريغ (القصى): ٣٠٠ جالون/الدقيقة من الرغوة الجاهزة
- مسافة تفريغ الرغوة: حوالي ٧٥-٦٥ قدم في حالة عدم هبوب رياح
- أسطوانة الهواء المضغوط (سكوبا): اثنتان، ٨٠ قدم مكعب/٣٠٠ رطل لكل بوصة مربعة
- المنظم: ضغط قابل للتعديل ٤٠-٦٠ رطل لكل بوصة مربعة
- خرطوم التوزيع: ٥٠ قدم من المطاط الصلب مقاس ١ بوصة أو القابل للطي
- طول الخرطوم الصالح للاستعمال: ٥٠٠ قدم

### المستلزمات الاختيارية والإكسسوارات

- أسطوانة هواء مضغوط إضافية ٨٠ قدم مكعب
- تهئية المكون متاحة
- إطارات للتضاريس الوعرة
- زجاجات الهواء الصناعي
- غطاء
- خرطوم مسطح الجدران



صنع في الولايات المتحدة الأمريكية



أخضر



متاح يضيظ أركتيك

# EWE

EASTERN WINGS EQUIPMENT  
THE FIRESTOP & INSULATION SPECIALIST

TRI-MAX  
C.A.F. FIRE TECHNOLOGIES



## Tiger Foam™ Fast Rise 600 bd/ft Kit – #TF-600FR

### Product Description

Tiger Foam E-84 Class 1 Fire-Rated foam insulation is a multipurpose, two-part, closed-cell polyurethane formula specifically manufactured for fire retardancy. The packaging, delivery system, and components were designed to be user- and environmentally friendly. These systems are both portable and disposable. They are completely self-contained to provide flexibility in end use performance. Tiger Foam E84 Fire-Rated SPF Class 1 Spray Foam can assist in attaining LEED and/or ENERGY STAR® Certification.



## Tiger Foam™ Fast Rise 600 bd/ft Kit – #TF-600FR

### Product Description

Tiger Foam™ Fire Block is a ready to use, expanding polyurethane foam. Ideal for filling, insulating and sealing a buildings' gaps, cracks and openings, both interior and exterior. Tiger Foam™ Fire Block has been fire tested according to ASTM E814 (modified)/ NFPA 286 standards and meets the requirements for fireblocking penetrations around wires, pipes, ducts and other items in single family residential construction. This product creates a durable seal that stops air infiltration, provides high insulation value and saves both time and energy. It has excellent adhesion to most building surfaces, contains no CFC's, HFC's or HCFC's and best of all is easy to use.



## Ignition Barrier Coating (Intumescent Coating) 5 gallon

### Product Description

Tiger Foam Ignition Barrier is an intumescent, latex based coating used in combination with Tiger Foam® E84 Class 1 Spray Foam System (SPF) in applications that require an ignition barrier. Tiger Foam® Ignition Barrier acts as a shield protecting the substrate from exposure or propagation of flame by surrounding the spray foam with a protective char-barrier. Tiger Foam® Ignition Barrier is supplied in 5-gallon (19 L) pails.





## EWE PERSONNEL LIFT MODEL: EHS

### Specifications

- Personal lift of 11 m handling heights.
- Equipped with electro-hydraulic system.
- Powered with AC and DC supplies.
- Using hardened aluminium in rail constructions to gain light weight.
- Easy set-up in a short period of time by one man, easy operation procedures.
- Establishing a vast and safe fulcrum by lowering to pass through doors with 21 cm height.
- Having special equipments for height lowering to pass through doors with 215cm height.
- Easy transportation and ability to be towed with two men.
- High efficiency and hydraulic system durability due to use of standard components and methodical design.
- Epoxy coating to protect the lift from corrosion in different climate.



## EWE HYDRULIC PERSONNEL LIFT MODEL: EHFL

### Specifications

- Personal lift of 18 m handling heights.
- Two or three men can work simultaneously.
- Equipped with electro-hydraulic system.
- Powered with AC and DC supplies.
- Using hardened aluminium in rail construction to gain light weight.
- Easy set-up in a short period of time by one man, easy operation procedures.
- Establishing a vast and safe fulcrum by outriggers or special supports.
- High efficiency and hydraulic system durability due to use of standard components and methodical design.
- Epoxy coating to protect the lift from corrosion in different climate
- Easy transportation and ability to be towed.



## EWE PERSONNEL LIFT MODEL: EHL

### Specifications

- Personal lift of 11 m handling heights.
- Equipped with electro-hydraulic system.
- Powered with AC and DC supplies.
- Using hardened aluminium in rail constructions to gain light weight.
- Easy set-up in a short period of time by one man, easy operation procedures.
- Establishing a vast and safe fulcrum by lowering to pass through doors with 21 cm height.
- Having special equipments for height lowering to pass through doors with 215cm height.
- Easy transportation and ability to be towed with two men.
- High efficiency and hydraulic system durability due to use of standard components and methodical design.
- Epoxy coating to protect the lift from corrosion in different climate.



## Specifications

- Hand gearbox, winch system.
- Anti-fall system.
- Special profile with high resistance.
- Using two separate steel wire ropes for ladder sliding & turning the rail mast results in proper safety & assurance.
- Transportation by manpower or towed by cars.
- Fast set-up by two or even one manpower.
- Vast fulcrum by rigging jacks.
- Easy transportation on different rough surfaces.
- Operator guide tables on the ladder body, for more information, easy access to operation instructions and reminding safety rules.



# WE Hydraulic Personnel Lifts Model: EHD & EHDL

## Specifications

- Personal lift of 12 m handling height.
- Equipped with electro-hydraulic system.
- Powered with AC and DC supplies.
- Using hardened aluminium in rail constructions to gain light weight.
- Easy set-up in a short period of time by one man, easy operation procedure:
- Establishing a vast and safe fulcrum by outriggers or special supports.
- High efficiency and hydraulic system durability due to use of standard components and methodical design.
- Epoxy coating to protect the lift from corrosion in different climate.
- Compact design to pass through 275x155 cm doors, needs only an area of 275x155 cm to be stored.
- Easy transportation and ability to be towed.



# SKY CLIMBERS: FOR EXTERNAL CLEANING & MAINTENANCE OF BUILDING

## Specifications

- EWE sky limbers for safe and easy reach unlimited height.
- Reliable lift for continuous working in any condition.
- A safe lift for working in the height, needed for different industries such as refineries, petrochemicals, cement, dam constructions, and more.
- Presented with platform from 1 up to 12 m length.
- Emergency lowering in case of power failure.
- Equipped with intelligent safety locks sensitive to the climber speed.
- Platform runs n the four steel wire ropes; two for platform runs & two for intelligent safety locks.
- Unlimited applicable heights considering the specifications of climber winch.
- Roof stand and support.
- Roof giraffe stand for those buildings the platform cannot be operated from the ground.
- Pneumatic and electric hoists
- The platform moves on four steel wire rope.





## SKYSCRAPERS

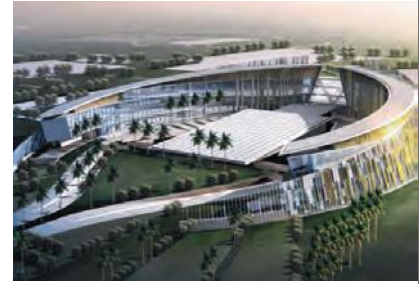
Burj Khalifa  
Princess Tower  
Marina Heights Towers  
Liwa Heights  
Fortune Tower  
Reef Tower  
Marina 101  
Marina Pinnacle Tower  
T2 & F2 @ JLT  
Al Reem Island  
Latifa Tower  
JLT Plots  
Shams Gate  
Etihad Tower  
Capital Gate  
Sulafa Tower  
U-Bora  
City of Lights  
Gate Tower  
Bab Al Qasr  
Emirates Financial Centre

## HOSPITALS

American Hospital  
Saudi German Hospital  
Cleveland Clinic  
Mafraq Hospital  
Al Amal Psychiatric  
Dubai Healthcare City

## UNIVERSITIES

Medical College, Sharjah  
UAE University, AlAin  
Zayed University



## GOVERNMENT & AIRPORT

Abu Dhabi Mid-Field Airport Terminal  
Dubai Al Maktoum Intl. Airport  
Dubai Terminal 3 Expansion  
Substations Ajman, Sharjah & RAK  
Rashidiya Depot  
Cooling Plant  
Khalifa Port & Ind. Zone

## HOTEL & RESORTS

Viceroy Hotel Resort  
Habtoor City  
Al Jazira Club Towers  
Rotana Khalidiya Palace  
Emirates Park Towers  
Novotel Hotel  
JW Marriot Hotel  
Fairmont Hotel  
Fountain View  
Meydan Race Course  
Celestia Hotel



## OTHER MAJOR

Dubai Mall  
Yas Mall  
Capital Plaza  
Swiss Tower  
Donna Towers  
Dubai Land  
Limitless  
Onyx Tower  
Saadiyat Beach  
Botanica  
Abu Dhabi Financial Centre





**EASTERN WINGS EQUIPMENT**

THE FIRESTOP & INSULATION SPECIALIST

## THE NEED TO FIRESTOP...

Firestopping is a matter of life safety. The lives of the firefighters as well as those of the building's occupants could depend on having properly firestopped penetrations. Using a product that is part of a recognized firestop system configuration will meet the requirements of the codes.

## WHOSE RESPONSIBILITY IS IT?

Let us examine several layers of responsibility: The architect/engineer, the local building official, the general contractor, the subcontractor/specialty contractor and the firestop manufacturer. When it comes to firestopping, each shares a common responsibility: LIFE SAFETY.



**Fire  
Protection**



**Sound  
Control**



**Thermal  
Comfort**



**Energy  
Conservation**



**Up to 90%  
Recycled**

Dubai : P.O. Box 120675, Dubai, U.A.E. Tel: +971 4 2662806, Fax: +971 4 2662897

Abu Dhabi : P.O. Box 130491, E-mail: ewe@ewe.ae, www.ewe.ae